

MICROBIOLOGY
SEEMS SMALL
BUT ITS
BIG WORK

OXFORD LAB FINE CHEM LLP

A GMP & CE CERTIFIED COMPANY

DEHYDRATED CULTURE MEDIA

CHROMOGENIC CULTURE MEDIA (OXYcrome)

PLANT TISSUE CULTURE MEDIA



Oxford[™]
Range of
Laboratory Chemicals

www.oxfordlabchem.com | www.oxfordlabfinechem.com

DEHYDRATED CULTURE MEDIA

CODE	PRODUCT NAME	HS CODE	GST %	PACK SIZE	PRICE (RS)
OLFC-100	A-1 Broth (A-1 Medium) for determination of faecal coliforms in water and foods by MPN technique	38210000	18	100gm	1500
				500gm	6400
OLFC-105	Acetate Agar For the differentiation of Shigella species from those of the Escherichia genus	38210000	18	100gm	1200
				500gm	3950
OLFC-110	Acetobacter Agar (Glucose) For maintenance of dextrose positive Acetobacter species	38210000	18	100gm	1400
				500gm	4400
OLFC-115	Acetobacter Agar (Mannitol) for maintenance of mannitol positive Acetobacter species	38210000	18	100gm	1400
				500gm	4400
OLFC-120	Acetobacter Broth (Glucose) For glucose positive Acetobacter species	38210000	18	100gm	1300
				500gm	4300
OLFC-125	Acetobacter Broth (Mannitol) for maintenance of mannitol positive Acetobacter species	38210000	18	100gm	1300
				500gm	4300
OLFC-130	Actinomyceae Isolation Agar for isolation and propagation of Actinomycetes from soil and water	38210000	18	100gm	1000
				500gm	3950
OLFC-135	Actinomyces Agar for cultivation and maintenance of the anaerobic Actinomyces species.	38210000	18	100gm	1200
				500gm	4250
OLFC-140	Actinomyces Broth for the maintenance and cultivation of Actinomyces species	38210000	18	100gm	1100
				500gm	3700
OLFC-145	Aleksandrow Agar (KSB) for isolation and detection of potassium solubilizing bacteria from soil sample	38210000	18	100gm	1200
				500gm	4300
OLFC-150	Aleksandrow Broth (KSB) for enrichment of potassium solubilizing bacteria from soil samples	38210000	18	100gm	1100
				500gm	3900
OLFC-155	Alkaline peptone Water For the cultivation of Vibrio species from sea foods and clinical specimens.	38210000	18	100gm	730
				500gm	3100
OLFC-160	Alternative Thioglycollate Medium for sterility testing of turbid or viscous biological products	38210000	18	100gm	430
				500gm	1730
OLFC-165	Amies Transport Medium w/o Charcoal for the transport of swab specimens to prolong the survival of microorganisms	38210000	18	100gm	1050
				500gm	3950
OLFC-170	Anaerobic Agar for cultivation of anaerobic bacteria especially Clostridium species	38210000	18	100gm	1150
				500gm	4450

OLFC-175	Andrade Peptone Water as a basal medium to study fermentation reactions by adding carbohydrates	38210000	18	100gm	800
				500gm	3500
OLFC-180	Antibiotic Assay Medium No.1 (Seed Agar) for microbiological assay of β -lactam and other Antibiotics	38210000	18	100gm	1050
				500gm	4300
OLFC-185	Antibiotic Assay Medium No.2 for microbiological assay of antibiotics	38210000	18	100gm	1100
				500gm	4800
OLFC-190	Antibiotic Assay Medium No.3 (Assay Broth) for microbiological assay of antibiotics	38210000	18	100gm	900
				500gm	3500
OLFC-195	Antibiotic Assay Medium No.5 (Streptomycin Assay Agar w/ Yeast Extract) for microbiological assay of Streptomycin using Bacillus subtilis	38210000	18	100gm	1200
				500gm	4600
OLFC-200	Antibiotic Assay Medium No.9 (Polymyxin Base Agar) for assaying the products containing Polymyxin-B	38210000	18	100gm	1100
				500gm	4400
OLFC-205	Antibiotic Assay Medium No. 10 (Polymyxin Seed Agar) as a seed layer medium for assaying the products containing Polymyxin-B, Carbenicillin, Colistin and Colistimethate sodium.	38210000	18	100gm	1200
				500gm	4600
OLFC-210	Antibiotic Assay Medium No.11 (Neomycin, Erythromycin Assay Agar) for microbiological assay of antibiotics	38210000	18	100gm	1050
				500gm	4200
OLFC-215	Antibiotic Assay Medium No.11 (Veg) for microbiological assay of antibiotics	38210000	18	100gm	1000
				500gm	4200
OLFC-220	Antibiotic Assay Medium No.19 for microbiological assay of Amphotericin B, Natamycin and Nystatin using Saccharomyces Cerevisiae	38210000	18	100gm	1100
				500gm	4300
OLFC-225	Antibiotic Assay Medium No.19 (Veg) for microbiological assay of Amphotericin B, Natamycin and Nystatin using Saccharomyces Cerevisiae	38210000	18	100gm	1300
				500gm	4500
OLFC-230	Antibiotic Assay Medium No.32 for microbiological assay of Dihydrostreptomycin and Vancomycin by preparing inoculum of Bacillus subtilis ATCC 6633	38210000	18	100gm	1100
				500gm	4300
OLFC-235	Antibiotic Assay Medium No.39 for microbiological assay of Neomycin as well as Streptomycin using Klebsiella pneumoniae	38210000	18	100gm	1050
				500gm	4100
OLFC-240	Arginine Dihydrolase Broth for detection of arginine dihydrolase producing Microorganisms.	38210000	18	100gm	1000
				500gm	4250

OLFC-245	Aseptic Packing Line Medium an ideal medium used for validation of aseptic packing and filling lines	38210000	18	100gm	1100
				500gm	4000
OLFC-250	Ashby's Glucose Agar For the cultivation of Azotobacter species that can utilize mannitol as carbon and atmospheric nitrogen as nitrogen source.	38210000	18	100gm	1200
				500gm	4300
OLFC-255	Ashby's Mannitol Agar for isolation of Azotobacter species from soil that can use mannitol and atmospheric nitrogen as source of carbon and nitrogen respectively	38210000	18	100gm	1200
				500gm	4300
OLFC-260	Ashby's Mannitol Broth for isolation of Azotobacter species from soil	38210000	18	100gm	1200
				500gm	4300
OLFC-265	Ashby's Sucrose Agar for growth and maintenance of Azotobacter species from soil samples	38210000	18	100gm	1150
				500gm	4100
OLFC-270	Ashby's Sucrose Broth for growth and maintenance of Azotobacter species	38210000	18	100gm	1000
				500gm	3800
OLFC-275	Asparagine Broth for identification and enumeration of Pseudomonas aeruginosa	38210000	18	100gm	1400
				500gm	5500
OLFC-280	Asparagine Proline Broth for the cultivation of Pseudomonas aeruginosa by membrane filter technique	38210000	18	100gm	1100
				500gm	4050
OLFC-285	Azide Dextrose Broth for detection of faecal Streptococci in water, sewage, food and other materials	38210000	18	100gm	1200
				500gm	4100
OLFC-290	Azospirillum Medium W/ Agar (Twin Pack) for cultivation of Azospirillum species	38210000	18	100gm	1200
				500gm	4700
OLFC-295	Azospirillum Medium W/O Agar (Twin Pack) for cultivation of Azospirillum species	38210000	18	100gm	1300
				500gm	5000
OLFC-300	Azotobacter Agar (Glucose) for isolation and cultivation of Glucose positive Azotobacter species from soil	38210000	18	100gm	1100
				500gm	3950
OLFC-305	Azotobacter Agar (Dextrose) for isolation and cultivation of Dextrose positive Azotobacter species from soil	38210000	18	100gm	1100
				500gm	3950
OLFC-310	Azotobacter Broth (Dextrose) for enrichment & cultivation of Azotobacter species from soil	38210000	18	100gm	1150
				500gm	4400
OLFC-315	Azotobacter Agar (Mannitol) for isolation, cultivation and identification of mannitol positive Azotobacter species from soil	38210000	18	100gm	1150
				500gm	4400
OLFC-320	Azotobacter Broth (Mannitol) for cultivation of mannitol positive Azotobacter species from soil	38210000	18	100gm	1050
				500gm	4700

OLFC-325	Bacillus Differentiation Agar Used for the differentiation between Bacillus cereus and Bacillus subtilis based on mannitol fermentation.	38210000	18	100gm	1500
				500gm	4900
OLFC-330	Bacillus Medium used for the cultivation of Bacillus licheniformis	38210000	18	100gm	800
				500gm	3300
OLFC-335	Baird Parker Agar Base for isolation and enumeration of coagulase positive Staphylococci from food and other substance	38210000	18	100gm	950
				500gm	4250
OLFC-340	Bifidobacterium Agar for the cultivation and maintenance of Bifidobacterium species	38210000	18	100gm	1300
				500gm	5300
OLFC-345	Bile Esculin Agar for isolation & identification of Yersinia enterocolitica from food and animal feeding products	38210000	18	100gm	2800
				500gm	11500
OLFC-350	Bile Esculin Agar Base w/o Esculin for differential & presumptive identification of group D Streptococci from food & pharma products	38210000	18	100gm	1600
				500gm	5000
OLFC-355	Bile Esculin Azide Agar for selective isolation and presumptive identification of faecal Streptococci	38210000	18	100gm	2200
				500gm	8400
OLFC-360	Bile Salt Agar for isolation and enumeration of bile tolerant enteric bacilli	38210000	18	100gm	1100
				500gm	4600
OLFC-365	Bismuth Glycine Glucose Yeast Agar/Nickerson Medium	38210000	18	100gm	895
				500gm	3190
OLFC-370	Bismuth Sulphite Agar for selective isolation of Salmonellae from faeces, urine, sewage and other materials	38210000	18	100gm	850
				500gm	3900
OLFC-375	Blood Agar Base (Infusion Agar) for isolation and cultivation of various fastidious pathogenic microorganisms after addition of blood	38210000	18	100gm	800
				500gm	3400
OLFC-380	Brain Heart Infusion Agar (BHI Agar) for cultivation of fastidious pathogenic bacteria, yeasts and molds	38210000	18	100gm	800
				500gm	3500
OLFC-385	Brain Heart Infusion Broth for cultivation of fastidious microorganisms associated with blood culture	38210000	18	100gm	800
				500gm	3390
OLFC-390	Brilliant Green Agar Medium for selective isolation of Salmonellae other than Salmonella typhi from faeces and foods etc	38210000	18	100gm	800
				500gm	3200

OLFC-395	Brilliant Green Bile Broth 2% (Brilliant Green Bile Lactose Broth 2%) for detection and confirmation of coliform bacteria in water, waste water, foods, milk and dairy products	38210000	18	100gm	720
				500gm	3300
OLFC-400	Brilliant Green phenol red lactose agar for detection and confirmation of Salmonella species from water samples	38210000	18	100gm	1200
				500gm	4500
OLFC-405	Brucella Agar Base for selective isolation and cultivation of Brucella or Campylobacter species from clinical as well as nonclinical specimens	38210000	18	100gm	1000
				500gm	4150
OLFC-410	Buffered Glucose Broth (MR-VP Medium) for performance of Methyl Red and Voges Proskauer tests based in differentiation of coliaerogenes group	38210000	18	100gm	650
				500gm	2600
OLFC-415	Buffered Listeria Enrichment Broth Base for detection and confirmation of Listeria monocytogenes	38210000	18	100gm	1550
				500gm	6400
OLFC-420	Buffered Peptone Water for increasing the recovery of injured Salmonella species from foods prior to selective enrichment and isolation	38210000	18	100gm	600
				500gm	2700
OLFC-425	Buffered Sodium Chloride- Peptone solution (Harmonized) to be used as cuent in pharmaceutical testing according to harmonized methods	38210000	18	100gm	720
				500gm	2800
OLFC-430	Burkholderia Cepacia Agar Base for isolation of Burkholderia cepacia from the respiratory secretions of patients with cystic fibrosis and other specimens	38210000	18	100gm	1000
				500gm	4760
OLFC-435	Bushnell Haas Agar for examination of fuels for microbial contamination and also for examine hydrocarbon deterioration by bacteria	38210000	18	100gm	1500
				500gm	4400
OLFC-440	Bushnell Haas Broth for examination of fuels for microbial contamination and also for examine hydrocarbon deterioration by bacteria	38210000	18	100gm	1000
				500gm	4350
OLFC-445	Candida Agar for the isolation and differentiation of Candida albicans	38210000	18	100gm	1150
				500gm	4400
OLFC-450	Carbohydrate Consumption Broth Base for the cultivation and differentiation of Listeria species	38210000	18	100gm	1050
				500gm	4150
OLFC-455	Cary-Blair Medium Base (Transport Medium w/o Charcoal) for the collection and shipment of clinical specimen	38210000	18	100gm	1000
				500gm	4100

OLFC-460	Casein Hydrolysate Yeast Extract Broth (Casamino acid yeast extract broth) for the cultivation of Bacillus cereus to enhance toxin production and use in the Enterotoxins Test	38210000	18	100gm	940
				500gm	3390
OLFC-465	Casitone Agar for the susceptibility testing of fungi to antifungal agents (except 5-fluorocytosine) by the agar disk diffusion method	38210000	18	100gm	1000
				500gm	3800
OLFC-470	Casitose Yeast Extract Broth (CAYE) for the cultivation of Vibrio cholerae cultures while testing their enterotoxigenicity	38210000	18	100gm	1200
				500gm	4100
OLFC-475	Cetrimide Agar Base for the selective isolation of Pseudomonas aeruginosa from clinical samples	38210000	18	100gm	700
				500gm	3300
OLFC-480	Cetrimide Agar Base (Harmonized) for the selective isolation and identification of Pseudomonas aeruginosa in pharmaceutical testing according to harmonized methods.	38210000	18	100gm	800
				500gm	3450
OLFC-485	Cetrimide Broth for the selective enrichment of Pseudomonas aeruginosa	38210000	18	100gm	800
				500gm	3200
OLFC-490	Chapman Stone Agar for selective isolation of Staphylococci causing food poisoning	38210000	18	100gm	1000
				500gm	4100
OLFC-495	Chloramphenicol Yeast Glucose Agar for isolation and selective enumeration of yeasts and molds in milk and milk products	38210000	18	100gm	850
				500gm	3500
OLFC-500	Chocolate Agar Base for the isolation and cultivation of fastidious microorganisms like Neisseria gonorrhoeae	38210000	18	100gm	1100
				500gm	4300
OLFC-505	C.L.E.D. Agar w/ Bromo Thymol Blue (CLED Agar) (Brolacin Agar) for isolation and differentiation of urinary pathogens via lactose fermentation	38210000	18	100gm	900
				500gm	3450
OLFC-510	OXYcrome Chromogenic Bacillus Agar Base for the isolation and differentiation between various species of Bacillus by chromogenic method	38210000	18	100gm	1750
				500gm	6900
OLFC-515	OXYcrome Candida Differential Agar Base for selective and differential medium for rapid isolation and identification of Candida species from mixed cultures	38210000	18	100gm	6200
				500gm	26000
OLFC-520	OXYcrome Chromogenic Coliform Agar for determination of coliforms and Escherichia coli in water samples	38210000	18	100gm	6400
				500gm	27000

OLFC-525	OXYcrome E Coli Agar for the detection and enumeration of Escherichia coli and coliform from food samples.	38210000	18	100gm	2800
				500gm	11700
OLFC-530	OXYcrome ESBL Agar Base for the selective isolation of ESBL producing organisms	38210000	18	100gm	3400
				500gm	15000
OLFC-535	OXYcrome Salmonella Agar for the identification and differentiation of Salmonella species	38210000	18	100gm	12500
				500gm	56800
OLFC-540	OXYcrome UTI Agar for the identification and confirmation of microorganisms causing urinary tract infections	38210000	18	100gm	3500
				500gm	14000
OLFC-545	OXYcrome UTI Modified Agar for the enumeration and differentiation of enteric pathogens in urinary tract infections	38210000	18	100gm	3000
				500gm	11000
OLFC-550	Clostridial Agar for selective isolation of pathogenic Clostridia from mixed flora	38210000	18	100gm	1100
				500gm	4350
OLFC-555	Columbia Agar Base (Harmonized) for the detection of Clostridium sporogenes from pharmaceutical products	38210000	18	100gm	900
				500gm	3600
OLFC-560	Columbia Agar Base for the detection of Clostridium sporogenes from pharmaceutical products	38210000	18	100gm	900
				500gm	3600
OLFC-565	Columbia Blood Agar Base w/ Hemin an enriched base for preparation of chocolate and blood agar and for various selective and identification media.	38210000	18	100gm	1800
				500gm	8400
OLFC-570	Corn Starch Broth	38210000	18	100gm	700
				500gm	2400
OLFC-575	Corn Starch Medium	38210000	18	100gm	650
				500gm	2350
OLFC-580	Corn Meal Agar for production of chlamydo spores by Candida albicans and a maintenance of fungal stock cultures	38210000	18	100gm	900
				500gm	4000
OLFC-585	Corn Meal Agar w/ Polysorbate 80 for use in qualitative procedures as general purpose media for the cultivation of fungi	38210000	18	100gm	1000
				500gm	3600
OLFC-590	Czapek Dox Agar a semisynthetic medium used for general cultivation of fungi, yeasts and soil bacteria	38210000	18	100gm	850
				500gm	3050
OLFC-595	Czapek Dox Agar w/ Chloramphenicol a semisynthetic medium used for general cultivation of fungi, yeasts and soil bacteria	38210000	18	100gm	1000
				500gm	3400

OLFC-600	Czapek Dox Broth semisynthetic medium for cultivation of fungi capable of utilizing sodium nitrate as the sole source of nitrogen	38210000	18	100gm	750
				500gm	2750
OLFC-605	Czapek Dox Broth w/ Chloramphenicol for the general cultivation of fungi from water samples.	38210000	18	100gm	700
				500gm	2600
OLFC-610	Czapek Yeast Extract Agar for the cultivation and maintenance of <i>Aspergillus niger</i> .	38210000	18	100gm	1350
				500gm	4900
OLFC-615	Deoxycholate Citrate Agar for the selective isolation and cultivation of enteric pathogens such as <i>Salmonella</i> and <i>Shigella</i> species	38210000	18	100gm	1150
				500gm	4900
OLFC-620	Dextrose Tryptone Agar for detection and enumeration of mesophilic and thermophilic aerobic organisms in food spoilage	38210000	18	100gm	1150
				500gm	4100
OLFC-625	Dey-Engley Neutralizing Agar for disinfectant testing, wherein neutralization agent is important for determining its bactericidal activity	38210000	18	100gm	1400
				500gm	5300
OLFC-630	Dey-Engley Neutralizing Broth for neutralizing and testing antiseptics and disinfectants	38210000	18	100gm	1250
				500gm	4500
OLFC-635	Dichloran Rose Bengal Chloramphenicol Agar (DRBC Agar) for selective isolation and enumeration of yeasts and moulds from food samples	38210000	18	100gm	1400
				500gm	5000
OLFC-640	Differential Reinforced Clostridial Broth Base For cultivation of <i>Clostridia</i> from water samples.	38210000	18	100gm	800
				500gm	2950
OLFC-645	Dixon Broth Base (Selective Enrichment of <i>Malassezia furfur</i>)	38210000	18	100gm	1100
				500gm	4000
OLFC-650	Dixon's Agar (Twin Pack) For isolation and cultivation of <i>Malassezia furfur</i>	38210000	18	100gm	1200
				500gm	5500
OLFC-655	EC Broth for selective enumeration of faecal as well as non faecal coliforms in water	38210000	18	100gm	850
				500gm	3300
OLFC-660	EE Broth, Mossel (Enterobacteriaceae enrichment Broth) (Harmonized) for selective enrichment of Enterobacteriaceae in various bacteriological examination of foods	38210000	18	100gm	1000
				500gm	4300
OLFC-665	EE Broth for selective enrichment of Enterobacteriaceae in the bacteriological examination of foods as well as animal feed stuffs	38210000	18	100gm	950
				500gm	4200

OLFC-670	EMB Agar (Eosine methylene Blue Agar) for differential isolation of gram-negative enteric bacteria from clinical and non-clinical samples	38210000	18	100gm 500gm	700 3100
OLFC-675	EMB Broth (Eosine methylene Blue Broth) for the isolation of gram-negative enteric bacteria from clinical and non-clinical samples	38210000	18	100gm 500gm	700 3000
OLFC-680	Endo Agar for confirmation of members of coliform group from clinical as well as non-clinical specimens	38210000	18	100gm 500gm	850 3200
OLFC-685	Enrichment Broth For Iron Bacteria (Twin Pack) for cultivation of agriculturally important microorganisms like Thiobacillus ferrooxidans	38210000	18	100gm 500gm	1000 3600
OLFC-690	Ethyl Violet Azide Broth (E.V.A. Broth) for isolation, cultivation and enumeration of Enterococci from faecal pollution in water and other specimens	38210000	18	100gm 500gm	1100 3500
OLFC-700	Ethyl Violet Azide Dextrose Agar for the detecting and confirming Streptococci and faecal pollution indication in water	38210000	18	100gm 500gm	1200 4800
OLFC-705	Fluid Casein Digest Soya-Lecithin Polysorbate 20 Medium (Twin Pack) for sanitary testing of general surfaces	38210000	18	100gm 500gm	2100 9400
OLFC-710	Fluid Selenite Cystine Medium (Selenite Cystine Medium) (Twin Pack) an enrichment medium for isolation of Salmonella species from food, dairy ,sanitary clinical samples	38210000	18	100gm 500gm	1200 4400
OLFC-715	Fluid Thioglycollate Medium for the sterility testing of biologicals and for cultivation of anaerobes, aerobes and microaerophiles	38210000	18	100gm 500gm	390 1750
OLFC-720	Fraser Broth Base recommended selective, enrichment medium for the isolation of Listeria species	38210000	18	100gm 500gm	1200 4500
OLFC-725	Fraser Secondary Enrichment Broth Base for isolation, cultivation and enrichment of Listeria monocytogenes from foods and other environmental samples	38210000	18	100gm 500gm	1500 6000
OLFC-730	Fungal Agar (Mycological Agar) for cultivation and maintenance of fungi	38210000	18	100gm 500gm	1400 5300
OLFC-735	Fungal Broth w/Low pH (Mycological Broth w/Low pH) for the selective enumeration and cultivation of saprophytic fungi & aciduric bacteria	38210000	18	100gm 500gm	950 4000
OLFC-740	Gelatin Agar for the cultivation and identification of vibrio species	38210000	18	100gm 500gm	1200 4600
OLFC-745	Gelatin Phosphate Salt Agar (GPS Agar) for the cultivation and characterization of vibrio cholerae from foods	38210000	18	100gm 500gm	1200 4600

OLFC-750	Glucose Agar (Dextrose Agar) for the cultivation of a wide variety of microorganisms	38210000	18	100gm	850
				500gm	3500
OLFC-755	Glucose Agar, Modified for maintenance of stock cultures of a variety of microorganisms	38210000	18	100gm	1150
				500gm	4200
OLFC-757	Glucose Asparagine Agar	38210000	18	100gm	1050
				500gm	3300
OLFC-760	Glucose Broth (Dextrose Broth) for the cultivation of a wide variety of microorganisms	38210000	18	100gm	800
				500gm	2800
OLFC-765	GN Broth (Medium 11) for enrichment of Shigella Spp. from pharmaceutical products	38210000	18	100gm	800
				500gm	3100
OLFC-770	Half Fraser Broth (Fraser Broth Base, Modified) for the selective enrichment of Listeria species from foods products	38210000	18	100gm	1500
				500gm	5900
OLFC-775	Hartley's Digest Broth for cultivation of various bacteria from blood especially Streptococci and Corynebacterium diphtheriae	38210000	18	100gm	920
				500gm	4000
OLFC-780	Hektoen Enteric Agar for the differential and selective isolation of Salmonella and Shigella spp. from pathological specimens	38210000	18	100gm	1200
				500gm	4900
OLFC-785	Hemorrhagic Coli (HC) Agar for isolation and enumeration with an enzyme labeled monoclonal antibody of Escherichia coli	38210000	18	100gm	1200
				500gm	4500
OLFC-790	Hugh Leifson medium for the detecting aerobic and anaerobic breakdown of glucose	38210000	18	100gm	1000
				500gm	4000
OLFC-795	Iron Sulphite Agar for detection of thermophilic anaerobic organisms causing sulphide spoilage in foods	38210000	18	100gm	950
				500gm	3900
OLFC-800	Isolation Medium For Iron Bacteria for isolation of iron bacteria, especially those from Sphaerotilus-Leptothrix group	38210000	18	100gm	1100
				500gm	4400
OLFC-805	Jensen's Medium (Jensen's Agar) for the detection and cultivation of nitrogen fixing bacteria	38210000	18	100gm	900
				500gm	3600
OLFC-810	Jenson's Broth for detection and cultivation of nitrogen fixing bacteria	38210000	18	100gm	1000
				500gm	4200
OLFC-815	KF Streptococcal Agar Base for the selective cultivation and enumeration of faecal streptococci	38210000	18	100gm	1050
				500gm	4000

OLFC-820	King's Medium B Base for the non-selective isolation, cultivation and pigment production by Pseudomonas species	38210000	18	100gm	900
				500gm	3700
OLFC-825	King's Medium B Broth for the detection of pigment production by Pseudomonas species	38210000	18	100gm	800
				500gm	3300
OLFC-830	Kligler Iron Agar For the differentiation and identification of gram-negative bacilli based on the fermentation of dextrose and lactose and production of H ₂ S.	38210000	18	100gm	800
				500gm	3100
OLFC-835	Koser Citrate Medium for differentiation of Escherichia coli and Enterobacter aerogenes based on citrate utilization	38210000	18	100gm	800
				500gm	3100
OLFC-840	Lactose Blue Agar for differentiation of lactose fermenting and non-fermenting bacteria of Enterobacteriaceae	38210000	18	100gm	1000
				500gm	4000
OLFC-845	Lactose Broth for the detection of lactose fermenting gram-negative coliforms, as pre-enrichment broth for Salmonella species	38210000	18	100gm	550
				500gm	2350
OLFC-850	Lauryl Sulphate Broth (Lauryl Tryptose broth) for detection and enumeration of coliform bacteria in water, waste water, dairy products and other foods samples	38210000	18	100gm	650
				500gm	2900
OLFC-855	Lethen Agar, Modified for screening cosmetic products for microbial Contamination	38210000	18	100gm	1300
				500gm	5300
OLFC-860	Lethen Broth, Modified for screening cosmetic products for microbial contamination	38210000	18	100gm	1200
				500gm	4900
OLFC-865	Listeria Enrichment Broth, Modified for selective enrichment of Listeria species	38210000	18	100gm	1900
				500gm	7400
OLFC-870	Listeria Enrichment Broth (Twin Pack) for selective enrichment of Listeria monocytogenes from clinical specimens	38210000	18	100gm	1400
				500gm	5050
OLFC-875	Listeria Enrichment Medium Base (UVM Medium) for the selective isolation and cultivation of Listeria monocytogenes from clinical specimens	38210000	18	100gm	1600
				500gm	6500
OLFC-880	Listeria Oxford Medium Base for isolation of Listeria species from pathological samples	38210000	18	100gm	2200
				500gm	8800

OLFC-885	Loeffler Medium Base for the cultivation of <i>Corynebacterium diphtheriae</i> from clinical samples and confirmation of chromogenesis, proteolysis and the production of ascospores	38210000	18	100gm	1450
				500gm	6400
OLFC-890	Lowenstein Jensen Medium Base (L.J. Medium) for the isolation and cultivation of <i>Mycobacterium</i> species	38210000	18	100gm	700
				500gm	3100
OLFC-895	Luria Bertani Agar, Miller for the cultivation and maintenance of recombinant strains of <i>Escherichia coli</i>	38210000	18	100gm	900
				500gm	3500
OLFC-900	Luria Bertani Broth, Miller for maintaining and propagating <i>Escherichia coli</i> in molecular microbiology procedures	38210000	18	100gm	800
				500gm	3200
OLFC-905	Lysine Decarboxylase Broth for distinguishing <i>Salmonella</i> serotype <i>Arizonae</i> from the Bethesda Ballerup group of <i>Enterobacteriaceae</i>	38210000	18	100gm	800
				500gm	3000
OLFC-910	Lysine Iron Agar For the differentiation of enteric organisms, especially <i>Salmonella</i> , based upon lysine decarboxylation/ deamination and H ₂ S production.	38210000	18	100gm	800
				500gm	3000
OLFC-915	Lysine Lactose Broth for the determination of lysine decarboxylase activity of lactose nonfermenting members of <i>Enterobacteriaceae</i> specially <i>Salmonellae</i>	38210000	18	100gm	1200
				500gm	4400
OLFC-920	M-Endo Agar, LES for the enumeration of coliforms in water using a two step membrane filter technique	38210000	18	100gm	1000
				500gm	3600
OLFC-925	M-Endo Broth for the estimation of coliforms in water samples using membrane filter technique	38210000	18	100gm	1300
				500gm	5000
OLFC-930	M-Enterococcus Agar Base for the isolation and enumeration of <i>Enterococci</i> in sewage, water & foods by membrane filter technique	38210000	18	100gm	1100
				500gm	4400
OLFC-935	M-Enterococcus Agar Base	38210000	18	100gm	1400
				500gm	4400
OLFC-940	MacConkey Agar w/o CV, NaCl & w/0.15 % Bile Salts for the isolation and differentiation of lactose fermenting and lactose nonfermenting enteric bacteria	38210000	18	100gm	700
				500gm	2850

OLFC-945	MacConkey Agar Base, Harmonized for selective isolation and differentiation of Escherichia coli and coliform bacteria in pharmaceutical testing according to harmonized methods	38210000	18	100gm 500gm	700 3000
OLFC-950	MacConkey Agar w/ 0.15% Bile Salts, NaCl w/o CV For isolation and detection of coliforms and enteric pathogens.	38210000	18	100gm 500gm	800 2800
OLFC-955	MacConkey Agar w/ 0.15% Bile Salts, CV and NaCl for the selective isolation and differentiation of coliform organisms and other enteric bacteria from clinical samples and water, sewage, food products etc.	38210000	18	100gm 500gm	700 3200
OLFC-1000	MacConkey Agar w/o CV w/0.5% Bile salt (BIS)	38210000	18	100gm 500gm	750 2800
OLFC-1005	MacConkey Agar w/o CV, NaCl, w/0.5% Bile Salt	38210000	18	100gm 500gm	750 2800
OLFC-1010	MacConkey Agar w/o CV, NaCl, w/ 0.5% Sodium Taurocholate for selection and recovery of the Enterobacteriaceae and related enteric gram-negative bacilli from clinical, food and water samples	38210000	18	100gm 500gm	750 3300
OLFC-1015	MacConkey Agar w/o CV, w/0.15% Bile Salt	38210000	18	100gm 500gm	750 2700
OLFC-1020	MacConkey Agar w/o CV, w/1.2% Agar for the selective isolation and differentiation of lactose fermenting and lactose non-fermenting enteric bacteria	38210000	18	100gm 500gm	800 3100
OLFC-1025	MacConkey Agar w/o CV, w/0.5% Sodium Taurocholate, NaCl for isolation and differentiation of lactose fermenting and lactose non-fermenting enteric bacteria	38210000	18	100gm 500gm	950 3600
OLFC-1030	MacConkey Agar W/ Bromothymol Blue for detection of lactose fermenting enteric bacteria	38210000	18	100gm 500gm	900 3500
OLFC-1035	MacConkey Sorbitol Agar Base for isolation and detection of Escherichia coli	38210000	18	100gm 500gm	1100 4000
OLFC-1040	MacConkey Broth w/Neutral Red (Double Strength) for the primary isolation of coliforms from large samples such as water or waste water	38210000	18	100gm 500gm	600 2600
OLFC-1045	MacConkey Broth w/BCP (Double Strength) for the presumptive identification of coliforms from water, milk and foods products	38210000	18	100gm 500gm	800 2900

OLFC-1047	MacConkey Broth w/BCP for presumptive identification of coliforms from water, milk and foods	38210000	18	100gm	650
				500gm	2750
OLFC-1050	MacConkey Broth w/BCP (Harmonized) for presumptive identification of coliforms from water, milk and foods products	38210000	18	100gm	600
				500gm	2700
OLFC-1055	MacConkey Broth W/BCP and NaCl for the presumptive identification of coliforms from water, milk and foods products	38210000	18	100gm	700
				500gm	2500
OLFC-1060	MacConkey Broth w/ Neutral Red for the selective enrichment and enumeration of coliforms from water	38210000	18	100gm	700
				500gm	2650
OLFC-1065	Malachite Green Broth for cultivation and selective enrichment of <i>Pseudomonas Aeruginosa</i>	38210000	18	100gm	900
				500gm	3000
OLFC-1070	Malonate Broth, Ewing Modified for the differentiation of members of Enterobacteriaceae on the basis of malonate utilization	38210000	18	100gm	1500
				500gm	4600
OLFC-1075	Malt Extract Agar Base for detection and cultivation of yeasts	38210000	18	100gm	1400
				500gm	5600
OLFC-1080	Malt Extract Broth Base for the detection and enumeration of yeasts, molds & aciduric microorganisms	38210000	18	100gm	1200
				500gm	4800
OLFC-1085	Mannitol Mobility Test Medium for studying mannitol fermentation and motility of bacteria	38210000	18	100gm	1100
				500gm	4600
OLFC-1090	Mannitol Salt Agar Base for selective isolation of pathogenic Staphylococci	38210000	18	100gm	800
				500gm	3100
OLFC-1093	Mannitol Salt Agar (Harmonized)	38210000	18	100gm	800
				500gm	3100
OLFC-1095	Mannitol Salt Broth for the selective isolation and cultivation of staphylococci	38210000	18	100gm	950
				500gm	3400
OLFC-1100	Mannitol Selenite Broth w/Brilliant Green (Twin Pack) for the enrichment of Salmonellae from faeces, food and other materials	38210000	18	100gm	1100
				500gm	4400
OLFC-1105	M-CP Agar Base for the isolation and enumeration of <i>Clostridium perfringens</i> from water samples using membrane filtration technique	38210000	18	100gm	1100
				500gm	4600
OLFC-1110	M-Endo Broth MF (MF Endo Medium) (M-Coliform Broth) for the isolation and enumeration of <i>Clostridium perfringens</i> from water samples using membrane filtration technique	38210000	18	100gm	1000
				500gm	4000
OLFC-1115	M-FC Agar Base for detection and enumeration of faecal coliforms by membrane filter technique at higher temp	38210000	18	100gm	1100
				500gm	4400

OLFC-1120	MGYP Agar for isolation and cultivation of wild yeasts in the brewing industry	38210000	18	100gm	1100
				500gm	4200
OLFC-1125	MGYP Agar With Copper for isolation and cultivation of wild yeast in the brewing industry	38210000	18	100gm	1100
				500gm	4300
OLFC-1130	Milk Agar (Brown and Scott, Modified) (Twin pack) for the enumeration of <i>Pseudomonas aeruginosa</i> in waters	38210000	18	100gm	1200
				500gm	4900
OLFC-1135	Mineral Modified Glutamate Broth Base for the enumeration of coliform bacteria in waste water samples	38210000	18	100gm	1150
				500gm	4400
OLFC-1140	Mitis Salivarius Agar Base for isolation of Streptococci from mixed cultures, especially <i>Streptococcus mitis</i> , <i>Streptococcus salivarius</i> and <i>Enterococcus faecalis</i>	38210000	18	100gm	1550
				500gm	4400
OLFC-1145	MIU Medium Base (Motility Urea Indole Agar Base)	38210000	18	100gm	1100
				500gm	4100
OLFC-1150	Modified Pseudomonas Selective Agar w/ Cetrimide (Twin Pack) for detection and enumeration of <i>Pseudomonas aeruginosa</i> in water	38210000	18	100gm	1300
				500gm	5000
OLFC-1155	Modified Soybean Bile Broth Base for the detection of <i>Escherichia coli</i> O157:H7 from food and animal feeding stuffs	38210000	18	100gm	700
				500gm	3000
OLFC-1160	Modified Tryptone Soya Broth Base without Novobiocin (m-TSB) for the selective enrichment of <i>Escherichia coli</i> O157 from food or faecal samples	38210000	18	100gm	4050
				500gm	16500
OLFC-1165	Modified Tryptone Soya Broth with Novobiocin (m-TSB-N) For the selective enrichment of enterohemorrhagic <i>E. coli</i> (EHEC) in foods, specially meat and poultry products.	38210000	18	100gm	4050
				500gm	16500
OLFC-1170	Moeller Decarboxylase Broth Base (Decarboxylase Broth Base, Moeller) for the differentiation of bacteria based on their ability to decarboxylate the amino acid.	38210000	18	100gm	3000
				500gm	11500
OLFC-1175	Motility Test Medium for the determination of bacterial motility	38210000	18	100gm	900
				500gm	3500
OLFC-1180	MRS Agar (Lactobacillus MRS Agar) for the isolation and enumeration of lactic acid bacteria from meat and meat products	38210000	18	100gm	900
				500gm	3400

OLFC-1185	MRS Broth (Lactobacillus MRS Broth) for isolation and cultivation of Lactobacillus species	38210000	18	100gm	900
				500gm	3200
OLFC-1190	Mueller Hinton Agar for determination of susceptibility of microorganisms to antimicrobial agents & for cultivation of Neisseria spp.	38210000	18	100gm	800
				500gm	3300
OLFC-1195	Mueller Hinton Agar 2% Glucose W/Methylene Blue for testing performing Antifungal Disk Diffusion Susceptibility of yeasts	38210000	18	100gm	1000
				500gm	4000
OLFC-1200	Mueller Hinton Broth for the cultivation of a wide variety of organisms and for antimicrobial susceptibility testing	38210000	18	100gm	800
				500gm	3000
OLFC-1205	Mueller Kauffman Tetrathionate Broth Base for improved enrichment and isolation of Salmonellae.	38210000	18	100gm	750
				500gm	2600
OLFC-1210	M-PA Agar Base for the detection and isolation of Pseudomonas aeruginosa by membrane filter technique.	38210000	18	100gm	1200
				500gm	4600
OLFC-1215	Mutans Sanguis Agar for differentiation of Streptococcus mutans and Streptococcus sanguinis associated with oral microflora	38210000	18	100gm	1300
				500gm	6300
OLFC-1220	MY-40 Agar for detection and isolation of osmophilic microorganisms from food samples	38210000	18	100gm	2000
				500gm	7500
OLFC-1225	Mycoplasma Agar Base (PPLO Agar Base) for isolation and cultivation of Mycoplasma species (PPLO)	38210000	18	100gm	1200
				500gm	4700
OLFC-1230	Mycoplasma Broth Base w/ CV (PPLO Broth Base w/ CV)	38210000	18	100gm	1600
				500gm	6100
OLFC-1235	Mycoplasma Broth Base w/o CV (PPLO Broth Base w/o CV)	38210000	18	100gm	1600
				500gm	6100
OLFC-1240	MYP Agar Base (Phenol Red Egg Yolk Polymyxin Agar Base) for the isolation and identification of pathogenic staphylococci and bacilli	38210000	18	100gm	1000
				500gm	4400
OLFC-1245	Nitrate Broth for detection of nitrate reduction by bacteria	38210000	18	100gm	950
				500gm	4300
OLFC-1250	Nutrient Agar for the cultivation of less fastidious microorganisms, can be enriched with blood or other biological fluids	38210000	18	100gm	670
				500gm	3100

OLFC-1255	Nutrient Agar (Veg) for the cultivation of less fastidious microorganisms, can be enriched with blood or other biological fluids	38210000	18	100gm	700
				500gm	3000
OLFC-1260	Nutrient Agar No. 2 for general purpose medium	38210000	18	100gm	800
				500gm	3300
OLFC-1265	Nutrient Broth for the general cultivation of less fastidious microorganisms, can be enriched with blood	38210000	18	100gm	540
				500gm	2400
OLFC-1270	Nutrient Broth (Veg) for the general cultivation of less fastidious microorganisms, can be enriched with blood	38210000	18	100gm	600
				500gm	2400
OLFC-1275	Nutrient Gelatin for the detection of gelatine liquefaction by proteolytic microorganisms	38210000	18	100gm	800
				500gm	3400
OLFC-1280	OF Basal Medium for differentiation of gram negative microorganisms based on oxidation-fermentation patterns	38210000	18	100gm	800
				500gm	3300
OLFC-1285	Orange Serum Agar for the isolation and enumeration of spoilage organisms of citrus products and for examining fruit beverages	38210000	18	100gm	1100
				500gm	4100
OLFC-1290	Ornithine Decarboxylase Broth for detection of the ability of microorganisms to decarboxylate ornithine	38210000	18	100gm	5400
				500gm	17000
OLFC-1300	Oxytetra Glucose Yeast Agar Base (OGYE Agar Base) for the selective isolation and enumeration of yeast and molds in food products	38210000	18	100gm	950
				500gm	3800
OLFC-1305	PA Broth (Presence-Absence Broth) for detection of presence and absence of coliform bacteria in water	38210000	18	100gm	900
				500gm	3300
OLFC-1310	0.1% Peptone Salt Diluent	38210000	18	100gm	700
				500gm	2400
OLFC-1315	Peptone Water all purpose growth medium and as a base of carbohydrate fermentation media.	38210000	18	100gm	700
				500gm	2850
OLFC-1320	Perfringens Agar Base (O.P.S.P.) for presumptive identification of Clostridium perfringens in foods	38210000	18	100gm	1200
				500gm	4400
OLFC-1325	Pfizer Selective Enterococcus Agar for selective isolation and cultivation of Enterococci	38210000	18	100gm	1500
				500gm	4600
OLFC-1330	Phenol Red Broth Base For the study of carbohydrate fermentations	38210000	18	100gm	850
				500gm	3100

OLFC-1335	Phenol Red Mannitol Broth for determining the ability of microorganisms to ferment mannitol	38210000	18	100gm	1000
				500gm	4100
OLFC-1440	Phenol Red Sucrose Broth for Sucrose fermentation studies of microorganisms	38210000	18	100gm	900
				500gm	3300
OLFC-1445	Phenol Red Xylose Broth for Xylose fermentation studies of microorganisms	38210000	18	100gm	2000
				500gm	6000
OLFC-1450	Phenylalanine Agar for differentiation of Proteus & Providencia from other members of Enterobacteriaceae based on their ability to form phenyl pyruvic acid from phenylalanine	38210000	18	100gm	1100
				500gm	4200
OLFC-1455	Pikovskaya's Agar for the detection of phosphate solubilizing soil microorganisms	38210000	18	100gm	1100
				500gm	4500
OLFC-1460	Pikovskaya's Broth (Medium) for the cultivation phosphate solubilizing microorganisms	38210000	18	100gm	1000
				500gm	4400
OLFC-1465	Plate Count Agar (Standard Plate Agar) for the enumeration of viable bacteria in milk and dairy products by pour plate technique	38210000	18	100gm	850
				500gm	3800
OLFC-1470	PNY Medium for cultivation and isolation of Lactobacillus species	38210000	18	100gm	2300
				500gm	9200
OLFC-1475	Potato Carrot Agar for reproduction of Pyronema domesticum	38210000	18	100gm	1100
				500gm	4500
OLFC-1480	Potato Carrot Broth for reproduction of Pyronema domesticum	38210000	18	100gm	1000
				500gm	4400
OLFC-1485	Potato Dextrose Agar for the isolation and enumeration of yeasts & molds from dairy & other food products	38210000	18	100gm	750
				500gm	2900
OLFC-1490	Potato Dextrose Agar (Harmonized) for the isolation and enumeration of yeasts & molds from dairy & other food products	38210000	18	100gm	850
				500gm	3050
OLFC-1495	Potato Dextrose Agar (Veg) for isolation, cultivation and enumeration of yeasts and molds from dairy and food products. Used to induce sporulation in many fungi	38210000	18	100gm	750
				500gm	2900
OLFC-1500	Potato Dextrose Agar w/Chloramphenicol for the cultivation and isolation of yeasts and molds from foods, dairy and cosmetics	38210000	18	100gm	1000
				500gm	3950
OLFC-1505	Potato Dextrose Broth for cultivation and enumeration of yeasts and molds	38210000	18	100gm	800
				500gm	2800

OLFC-1510	Proteose Agar for the cultivation of <i>Vibrio</i> species from foods in accordance with APHA	38210000	18	100gm	1600
				500gm	5500
OLFC-1515	Pseudomonas Agar Base for the selective isolation of <i>Pseudomonas</i> species from environmental samples, food & water	38210000	18	100gm	800
				500gm	3600
OLFC-1520	Pseudomonas Agar (For Fluorescein) for the detection of fluorescein production by <i>Pseudomonas</i> species	38210000	18	100gm	900
				500gm	3500
OLFC-1525	Pseudomonas Agar (For Pyocyanin) for detection of Pyocyanin production by <i>Pseudomonas</i> species	38210000	18	100gm	800
				500gm	3500
OLFC-1530	Pseudomonas Asparagine Broth for presumptive determination of <i>Pseudomonas aeruginosa</i> from recreational or natural water as per A.P.H.A.	38210000	18	100gm	3100
				500gm	10400
OLFC-1535	R-2A Agar for the heterotrophic plate count of treated potable water using longer incubation periods	38210000	18	100gm	1000
				500gm	4400
OLFC-1540	Rappaport Vassiliadis Medium for enrichment of <i>Salmonellae</i> , based on its ability to multiply selectively at high osmotic pressure, low pH and at 43 ⁰ C, with modest nutritional requirements.	38210000	18	100gm	980
				500gm	4300
OLFC-1545	Rappaport Vassiliadis Salmonella Enrichment Broth for the selective enrichment & isolation of <i>Salmonella</i> species from pharmaceutical products	38210000	18	100gm	1000
				500gm	4500
OLFC-1550	Rappaport Vassiliadis Salmonella Enrichment Broth (Harmonized) for the selective enrichment & isolation of <i>Salmonella</i> species from pharmaceutical products	38210000	18	100gm	900
				500gm	3800
OLFC-1555	Reinforced Medium for Clostridia for the cultivation and enumeration of <i>Clostridia</i> in pharmaceutical testing	38210000	18	100gm	900
				500gm	3800
OLFC-1560	Reinforced Medium for Clostridia (Harmonized) for the cultivation and enumeration of <i>Clostridia</i> in pharmaceutical testing according to harmonized methods.	38210000	18	100gm	800
				500gm	3150
OLFC-1565	Rhamnose Broth for the demonstration of rhamnose fermentation by <i>Listeria monocytogenes</i>	38210000	18	100gm	2200
				500gm	8000
OLFC-1570	Rhizobium Medium (Agar) for cultivation and isolation of <i>Rhizobium</i> species	38210000	18	100gm	900
				500gm	3000

OLFC-1575	Rhizobium Medium (Broth) for cultivation and isolation of Rhizobium species	38210000	18	100gm 500gm	900 3000
OLFC-1580	Robertson's Cooked Meat Medium (R.C. Medium) (Cooked Meat Medium) for the cultivation and maintenance of aerobes, anaerobes of stock cultures	38210000	18	100gm 500gm	2300 8300
OLFC-1585	Rose Bengal Agar Base for selective isolation and enumeration of yeasts and molds from environmental materials and foods	38210000	18	100gm 500gm	1100 3700
OLFC-1590	Rose Bengal Broth Base	38210000	18	100gm 500gm	1000 3400
OLFC-1595	Rose Bengal Chloramphenicol Agar for selective isolation and enumeration of yeasts and molds from environmental materials and foods	38210000	18	100gm 500gm	900 4000
OLFC-1600	Rose Bengal Chloramphenicol Broth	38210000	18	100gm 500gm	900 3800
OLFC-1605	Sabouraud 2% Dextrose Agar (Sabouraud Agar With Glucose) for the cultivation of yeasts and molds from different materials and for usage as a reference medium during performance testing of culture media.	38210000	18	100gm 500gm	800 3600
OLFC-1610	Sabouraud Dextrose Agar for the cultivation of yeasts, molds and aciduric microorganisms	38210000	18	100gm 500gm	800 3400
OLFC-1615	Sabouraud Dextrose Agar (Harmonized) for the selection, isolation and cultivation of yeasts and fungi	38210000	18	100gm 500gm	800 3400
OLFC-1620	Sabouraud Dextrose Agar w/Chloramphenicol for the selective cultivation of yeasts and molds	38210000	18	100gm 500gm	1050 3900
OLFC-1625	Sabouraud Dextrose Agar w/Cycloheximide & Chloramphenicol (Mycobiotic Agar) For the selective isolation and cultivation of fungi	38210000	18	50gm 100gm	7000 12000
OLFC-1630	Sabouraud Dextrose Broth for cultivation of yeasts, molds and aciduric microorganisms	38210000	18	100gm 500gm	500 1700
OLFC-1635	Sabouraud Dextrose Broth (Harmonized) for selection, isolation & cultivation of yeasts, molds and aciduric microorganisms	38210000	18	100gm 500gm	600 1900
OLFC-1640	Sabouraud Dextrose Broth w/Chloramphenicol used to to diagnose fungal infections such as candidiasis, dermatophytosis, and aspergillosis	38210000	18	100gm 500gm	750 2600

OLFC-1645	Sabouraud Maltose Broth for the propagation of yeasts and molds, especially the fungi concerned with skin and scalp lesions	38210000	18	100gm	900
				500gm	3600
OLFC-1650	Selenite Broth (Selenite F Broth) (Twin Pack) for isolation of Salmonella species from faeces, urine and other pathological materials	38210000	18	100gm	1000
				500gm	4100
OLFC-1655	Sheep Blood Agar Base w/o Blood for improved haemolytic reactions of organisms	38210000	18	100gm	1000
				500gm	4000
OLFC-1660	Sheep Blood Agar Base (GC Agar Base) Used for isolation and cultivation of Gonococci	38210000	18	100gm	1000
				500gm	4100
OLFC-1665	Shigella Broth Base for the isolation and cultivation of Shigella species from food stuff	38210000	18	100gm	1000
				500gm	3600
OLFC-1670	SIM Medium (Sulfite Indole Motility Medium) for the determination of hydrogen sulphide production, indole formation and motility of enteric bacilli	38210000	18	100gm	900
				500gm	3600
OLFC-1675	Simmons Citrate Agar for the differentiation of Enterobacteriaceae based on citrate utilization	38210000	18	100gm	800
				500gm	3550
OLFC-1680	Slanetz and Bartley Medium for the detection and enumeration of enterococci by membrane filtration method	38210000	18	100gm	1000
				500gm	4000
OLFC-1685	Soya Casein Digest Agar (Tryptone Soya Agar) (Soyabean Casein Digest Agar) Used for the isolation and cultivation of fastidious & non fastidious microorganisms	38210000	18	100gm	800
				500gm	3300
OLFC-1690	Soya Casein Digest Agar (Harmonized) (Tryptone Soya Agar) For isolation and cultivation of fastidious and non-fastidious microorganisms in pharmaceutical testing according to harmonized methods.	38210000	18	100gm	800
				500gm	3350
OLFC-1695	Soya Casein Digest Agar w/Lecithin & Tween 80 (Microbial Content Test Agar) for the detection & enumeration of microorganisms present on the surfaces of sanitary importance	38210000	18	100gm	900
				500gm	4000
OLFC-1700	Soya Casein Digest Medium (Tryptone Soya Broth) (Soybean Casein Digest Medium) for sterility testing and cultivation of fastidious and non-fastidious microorganisms	38210000	18	100gm	450
				500gm	1750
OLFC-1705	Soybean Casein Digest Medium (Harmonized)	38210000	18	100gm	370
				500gm	1790

OLFC-1710	SS Agar (Salmonella Shigella Agar) for the differential and selective isolation of Salmonella & Shigella species from pathological samples	38210000	18	100gm	750
				500gm	3300
OLFC-1715	SS Agar, Modified (Salmonella Shigella Agar Modified) a modified medium, which provides better growth of Salmonella and Shigella species.	38210000	18	100gm	1000
				500gm	3000
OLFC-1720	Starch Agar for detection of starch hydrolysing micro-organisms.	38210000	18	100gm	1000
				500gm	4400
OLFC-1725	Starch Casein Agar for detection of saccharolytic marine bacteria	38210000	18	100gm	1300
				500gm	4800
OLFC-1730	Stuart Transport Medium (Transport Medium, Stuart) for the preservation and transportation of Neisseria species and other fastidious organisms from clinic to the laboratory	38210000	18	100gm	1500
				500gm	6200
OLFC-1735	Sulphate Reducing Medium (Twin Pack) for detection, differentiation and estimation of sulphate reducing bacteria Thiobacillus thiooparus	38210000	18	100gm	985
				500gm	4600
OLFC-1740	Sulphate Reducing Agar (Twin Pack)	38210000	18	100gm	1100
				500gm	4000
OLFC-1745	T.A.T. Broth Base (Tryptone-Azolectin-Tween Broth Base) for sterility testing of highly viscous substances such as ointments, salves	38210000	18	100gm	900
				500gm	3900
OLFC-1750	TCBS Agar (Thiosulphate Citrate Bile Salts Sucrose Agar) for selective isolation of Vibrio cholerae & other enteropathogenic Vibrios causing food poisoning	38210000	18	100gm	950
				500gm	3900
OLFC-1755	Tellurite Blood Agar Base for the selective isolation and cultivation of Corynebacterium species	38210000	18	100gm	1400
				500gm	4900
OLFC-1760	Tergitol 7 Agar Base for selective isolation and identification of coliform bacteria from water	38210000	18	100gm	1100
				500gm	4600
OLFC-1765	Tergitol-7 Agar H for selective isolation and differentiation of enteric bacteria from urine specimens	38210000	18	100gm	1300
				500gm	5100
OLFC-1770	Terrific Broth (Tartoff-Hobbs Broth) a buffered enriched medium for cultivation of recombinant E. coli	38210000	18	100gm	1400
				500gm	5000
OLFC-1775	Tetrathionate Brilliant Green Bile Broth For isolation and identification of Salmonellae	38210000	18	100gm	800
				500gm	2700

OLFC-1780	Tetrathionate Broth Base for the isolation of Salmonellae from faecal samples, sewage and other samples	38210000	18	100gm 500gm	700 2550
OLFC-1805	Thayer Martin Medium Base (Thayer Martin Agar Base) for the selective isolation of Gonococci from clinical samples	38210000	18	100gm 500gm	800 3400
OLFC-1810	Thiobacillus Agar for the cultivation and isolation of Thiobacillus species	38210000	18	100gm 500gm	1300 4700
OLFC-1815	Thiobacillus Broth for the cultivation of Thiobacillus species	38210000	18	100gm 500gm	850 2990
OLFC-1820	Thioglycollate Agar for the growth and cultivation of anaerobic microorganisms	38210000	18	100gm 500gm	1000 4000
OLFC-1825	Thioglycollate Broth w/Liver Extract for the mass cultivation of anaerobes for vaccine production	38210000	18	100gm 500gm	1200 4000
OLFC-1830	Tinsdale Agar Base for selective isolation and differentiation of Corynebacterium diphtheriae	38210000	18	100gm 500gm	1300 4500
OLFC-1835	Tomato Juice Agar for the cultivation and enumeration of Lactobacilli	38210000	18	100gm 500gm	1200 4500
OLFC-1840	Tributyryn agar base w/o Tributyrin (TBA) for cultivation and enumeration of lipolytic microorganisms	38210000	18	100gm 500gm	1000 4000
OLFC-1845	Trichoderma harzianum Selective Agar Base for selective isolation of Trichoderma harzianum	38210000	18	100gm 500gm	1200 4600
OLFC-1850	Triple Sugar Iron Agar (TSI Agar) for identification of gram negative enteric bacilli on the basis of dextrose lactose and sucrose fermentation and hydrogen sulphide production	38210000	18	100gm 500gm	700 3200
OLFC-1855	Tryptic Soya Agar for a cultivation and maintenance of Salmonella typhi	38210000	18	100gm 500gm	850 3400
OLFC-1860	Tryptone Broth (Tryptone Water) for detection of indole producing microorganisms	38210000	18	100gm 500gm	700 2600
OLFC-1865	Tryptone Agar Base for determination of motility and carbohydrate fermentation reactions of aerobes and anaerobes	38210000	18	100gm 500gm	1000 4400
OLFC-1870	Tryptone Bile Agar for rapid detection and enumeration of Escherichia coli in foods	38210000	18	100gm 500gm	1000 4000

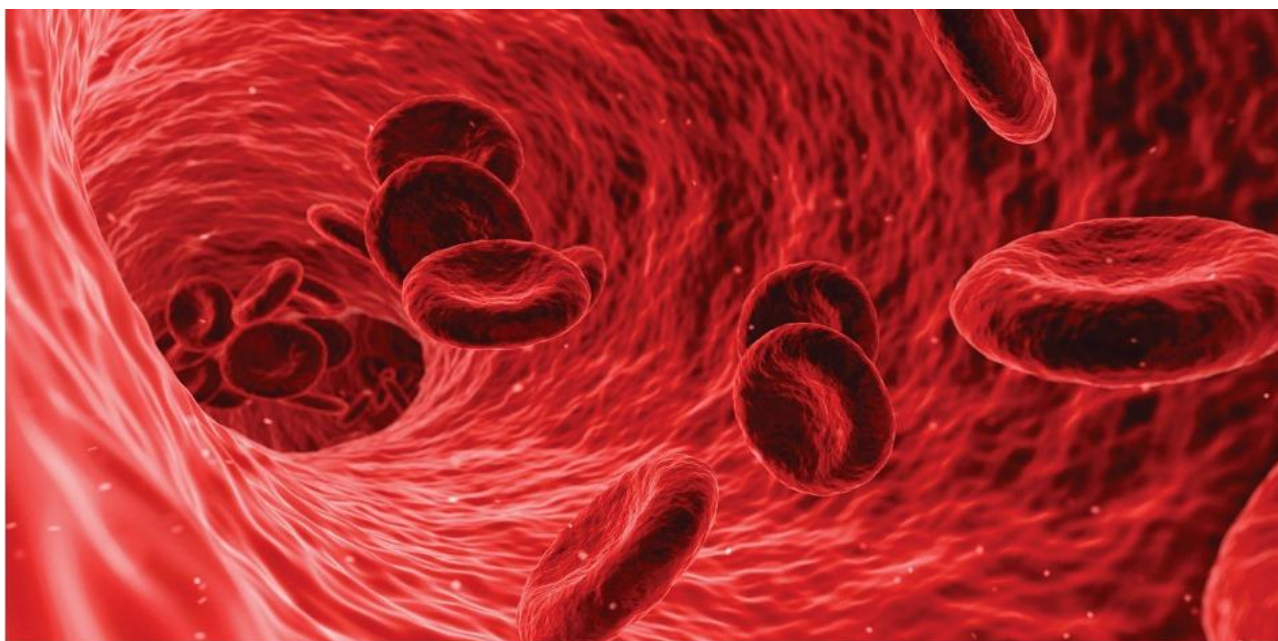
OLFC-1875	Tryptone Bile Glucuronide Agar (TBX Agar) (OXYcrome Chromogenic Tryptone Bile Glucuronide Agar) for the enumeration of Escherichia coli from food samples, animal feed and water samples	38210000	18	100gm 500gm	2100 8000
OLFC-1880	Tryptone Glucose Yeast Extract Broth for enumeration of bacteria in water, air, milk and dairy products.	38210000	18	100gm 500gm	800 2800
OLFC-1885	Tryptone Soya Yeast Extract Broth for isolation and cultivation of Listeria from Henry's light	38210000	18	100gm 500gm	1100 3200
OLFC-1890	Tryptone Tellurite Agar Base for selective isolation of pathogens from clinical specimens, especially from nose, throat and vagina	38210000	18	100gm 500gm	1200 4400
OLFC-1895	Tryptone Yeast Extract Cystine W/ Sucrose & W/O Bactitracin Agar Base for selective isolation of Streptococcus mutans	38210000	18	100gm 500gm	1400 5000
OLFC-1900	Tryptophan Broth for differentiation of bacteria on the basis of indole production	38210000	18	100gm 500gm	700 2600
OLFC-1905	TSC Agar Base (Tryptose Sulfite Cycloserine Agar base) for enumeration of Clostridium perfringens from food	38210000	18	100gm 500gm	1600 5600
OLFC-1910	Urea Agar Base for the detection of urease production by Proteus species and for identification of other members of Enterobacteriaceae	38210000	18	100gm 500gm	900 3500
OLFC-1915	Urea Broth Base for identifying bacteria on the basis of urea utilization, for the differentiation of Proteus species from Salmonella and Shigella species	38210000	18	100gm 500gm	900 3500
OLFC-1920	Urea Indole Medium for differentiation of microorganism especially Enterobacteriaceae on the basis of their ability to hydrolyze urea and indole production	38210000	18	100gm 500gm	1150 4600
OLFC-1925	Violet Red Bile Agar for isolation and enumeration of coli-aerogenes in water, milk and other dairy food products	38210000	18	100gm 500gm	800 3300
OLFC-1930	Violet Red Bile Broth for detection and enumeration of coliform bacteria in water and food	38210000	18	100gm 500gm	800 3000

OLFC-1935	Violet Red Bile Glucose Agar for the selective isolation, detection and enumeration of coli-aerogenes bacteria in water, milk other dairy products	38210000	18	100gm	900
				500gm	3400
OLFC-1940	Violet Red Bile Lactose Agar for detection and enumeration of coliform bacteria in food, water and dairy products	38210000	18	100gm	900
				500gm	3200
OLFC-1945	Vogel Johnson Agar Medium for selective isolation of coagulase positive mannitol fermenting Staphylococcus aureus from foods and clinical samples	38210000	18	100gm	800
				500gm	3200
OLFC-1950	Wills And Hobb's Medium Base isolation and identification of Clostridium from foods	38210000	18	100gm	1100
				500gm	4400
OLFC-1955	Wilson Blair Agar Base for isolation and cultivation of Salmonella typhi with addition of selective reagent	38210000	18	100gm	1100
				500gm	4500
OLFC-1960	XLD Agar (Xylose Lysine Deoxycholate agar) for selective isolation and enumeration of Salmonella typhi and other Salmonella species	38210000	18	100gm	800
				500gm	3600
OLFC-1965	XLD Agar (Xylose Lysine Deoxycholate agar) (Harmonized) for cultivation and isolation of Salmonella species in pharmaceutical testing according to harmonized methods	38210000	18	100gm	820
				500gm	3500
OLFC-1970	2-XYT Agar for the growth and maintenance of M13 phage or other filamentous ss DNA bacteriophages.	38210000	18	100gm	900
				500gm	3200
OLFC-1975	Yeast Extract Agar for plate count of microorganisms in water	38210000	18	100gm	700
				500gm	2800
OLFC-1980	Yeast Glucose Chloramphenicol Agar for the selective enumeration of yeasts and molds in milk and other milk products	38210000	18	100gm	900
				500gm	4400
OLFC-1985	Yeast Malt Agar (Yeast and Mold Agar) for the cultivation of fungi including yeasts and other aciduric organisms	38210000	18	100gm	1000
				500gm	4400
OLFC-1990	Yeast Mannitol Agar	38210000	18	100gm	1100
				500gm	4600
OLFC-1995	Yeast Mannitol Broth for cultivation of Rhizobium species	38210000	18	100gm	900
				500gm	3100
OLFC-2000	Yeast Peptone Dextrose Agar (YEPD)	38210000	18	100gm	1000
				500gm	4000

OLFC-2005	Yeast Peptone Dextrose Broth (YEPD) for maintenance and propagation of yeasts in molecular microbiology procedures	38210000	18	100gm	1400
				500gm	4800
OLFC-2010	Yeast Extract Rose Bengal Broth Base for the cold enrichment and recovery of <i>Yersinia enterocolitica</i> and <i>Yersinia pseudotuberculosis</i> from foods	38210000	18	100gm	1000
				500gm	3400
OLFC-2015	Yeast Fermentation Broth Base (Bromo Cresol Purple Broth Base) for differentiation of various microorganisms based on their fermentation of specific carbohydrates	38210000	18	100gm	900
				500gm	3700
OLFC-2020	Yeast Malt Broth (Malt Extract Broth)(YM Broth) for cultivation of yeasts, molds and aciduric microorganisms	38210000	18	100gm	800
				500gm	3300
OLFC-2025	Zinc Solubilizing Agar for isolation and detection of zinc solubilizing soil microorganisms	38210000	18	100gm	1000
				500gm	3600
OLFC-2030	Zinc Solubilizing Broth (Zinc Solubilizing Medium) for growth and maintenance of zinc solubilizing soil microorganism	38210000	18	100gm	900
				500gm	3200

PLANT TISSUE CULTURE MEDIA

CODE	PRODUCT NAME	HS CODE	GST %	PACK SIZE	PRICE (RS)
OLFC-5000	Banana Micropropagation Medium (w/Vitamins, w/o NH4NO3, Sucrose and Agar)	38210000	18	10 Lit 25 Lit	1670 3070
OLFC-5050	Banana Multiplication Medium (w/Vitamins, Glucose Sucrose, plant growth regulators and agar) for in vitro multiplication of Musa species	38210000	18	10 Lit 25 Lit	2670 4190
OLFC-5100	Banana Rooting Medium (With vitamins, Plant Growth Regulators, Sucrose, Activated charcoal and Agar)	38210000	18	10 Lit 25 Lit	3350 5750
OLFC-5150	Chu N6 Medium	38210000	18	10 Lit 25 Lit	1670 2350
OLFC-5200	Dendrobium (Orchid) Seed germination Medium w/ vitamin, sucrose and Agar	38210000	18	10 Lit 25 Lit	1620 2750
OLFC-5250	Murashige and Skoog Agar Base	38210000	18	10 Lit 25 Lit	1400 3000
OLFC-5300	Murashige and Skoog Modified Medium with CaCl2 and B5 Vitamin (Without Sucrose and Agar)	38210000	18	10 Lit 25 Lit	1280 2150
OLFC-5350	Murashige and Skoog Modified Medium With Calcium Chloride, FeNaEDTA, Vitamins and Sucrose Without Agar	38210000	18	10 Lit 25 Lit	1250 2500
OLFC-5400	Orchid Maintaince Medium W/ CaCl2, Vitamins, sucrose, Peptone, MES, Activated Charcoal, without Agar	38210000	18	10 Lit 25 Lit	2250 4050
OLFC-5450	Strawberry Multiplication Medium W/ Vitamins, Sucrose, 6 BAP, and Agar	38210000	18	10 Lit 25 Lit	2500 3800
OLFC-5500	Strawberry Rooting Medium w/ Vitamins, Sucrose, IBA, Activated charcoal and Agar	38210000	18	10 Lit 25 Lit	2500 3770
OLFC-5550	Linsmaier And Skoogs Medium	38210000	18	10 Lit 25 Lit	1500 1980



Oxford

Range of
Laboratory Chemicals

OXFORD LAB FINE CHEM LLP

- 📍 Unit No. 12, 1st floor, Neminath Industrial Estate No. 6, Navghar, Vasai (East). Dist - Palghar - 401 210. Maharashtra, INDIA.
- ☎ +91 (250) 239 0032 / 239 0989
- ✉ sales@oxfordlabchem.com / info@oxfordlabchem.com
- 🌐 www.oxfordlabfinechem.com / www.oxfordlabchem.com